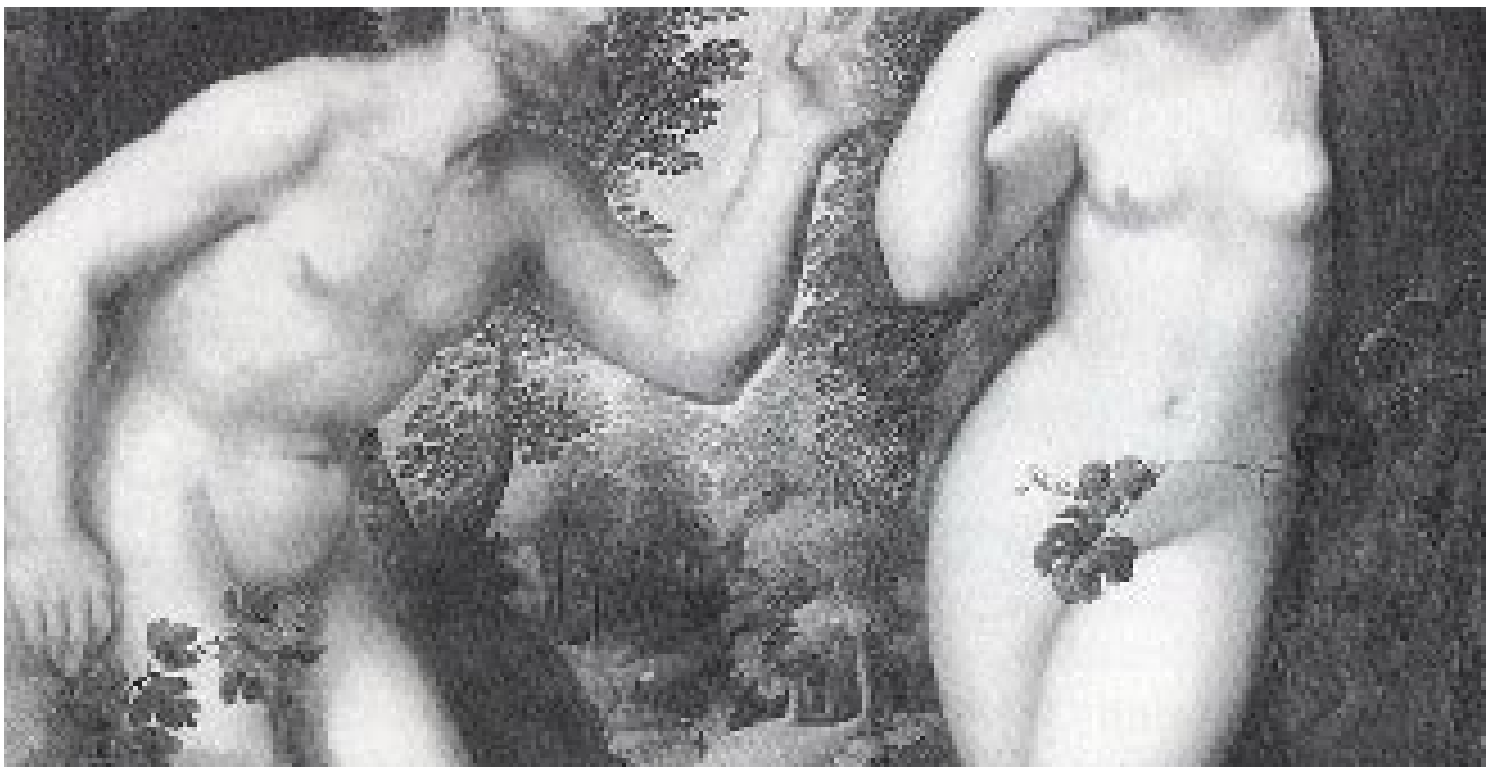


EUROPEAN VISUAL CULTURE READING GROUP

*Dirk den Hartog*  
*Sinuuous Rhythms and*  
*Serpentine Lines:*

*Milton's Eden, The Baroque, and the English Garden*



Beginning with Horace Walpole in 1771, various writers have speculated on the relationship between Milton's depiction of Eden in *Paradise Lost* and the 18th century development of the 'natural' landscape garden in England. More recently John Dixon Hunt has amplified Joseph Addison's unpatriotic suggestion of 1712 that "Milton would never have been able ... to have laid out his Paradise, had he not seen the ... gardens of Italy". Within the context of such conjecture, this paper explores the possibilities of relationship between a stylistic trait in Milton's Edenic verse – what I argue to be a tendency towards a 'sinuosity' of rhythm in the poetry's blank verse iambic pentameter – and the 'serpentine' line of the English 'natural' garden design. The claim of 'sinuosity' is itself developed in relation to a separate debate about Milton and 'the baroque', drawing especially Murray Roston's *Milton and Baroque* (1980) and its use of Wolflin's concept of the baroque as 'a-tectonic'.

Monday 6 June

6.30 pm Room 148 Elisabeth Murdoch Building

*All Welcome*